



BULGARIA | CHINA | INDIA | MEXICO | THAILAND

MOLD SOLUTIONS

**All in one:
We are a one-stop contract manufacturer.**



BENEFITS OF WORKING WITH VEM



HIGH TECH TOOL & INJECTION SHOPS

German owned with western management on site, high-quality equipment

TECHNICAL SUPPORT IN NORTH AMERICA AND EUROPE

for mold design in special projects

COMPLETE PROJECT MANAGEMENT

with English speaking engineers and management

USMCA & EUROPE BASE

contract-tool-shops for warranty and modifications



HISTORY - VEM GROUP

1998

Start

Company registered in Hong-Kong as VEM - Virtual Electronics Manufacturing Ltd

01

2008

VEM Thailand

Set up 100% owned factory in Rayong, Thailand, 3000sqm

03

2019

VEM Europe

Set up 100% owned factory in Plovdiv, Bulgaria, 2000sqm

05

2022

VEM Thailand

Added another 5000sqm factory in Rayong, Thailand.

07

2003

VEM China

Set up 100% owned factory in Shenzhen, China, 5000sqm

02

2016

VEM India

Set up 100% owned factory in Pune, India, 1500sqm

04

2020

VEM Mexico

Set up 100% owned factory in Queretaro, Mexico, 2 facilities with total of 3000sqm

06

2024

VEM China

Added a clean room and ISO 13485 certification

08



QUALITY CERTIFICATIONS

China

- ISO 9001
- ISO 13485

Thailand

- ISO 9001
- ISO 13485
- ISO 14001
- IATF 16949
- AS 9100
- ISO class 7 clean room
- ISO class 8 clean room (2x)

India

- ISO 9001
- IATF 16949

Mexico

- ISO 9001
- IATF 16949
- AS 9100

Bulgaria

- ISO 9001
- IATF 16949



REFERENCE CUSTOMER



ISUZU



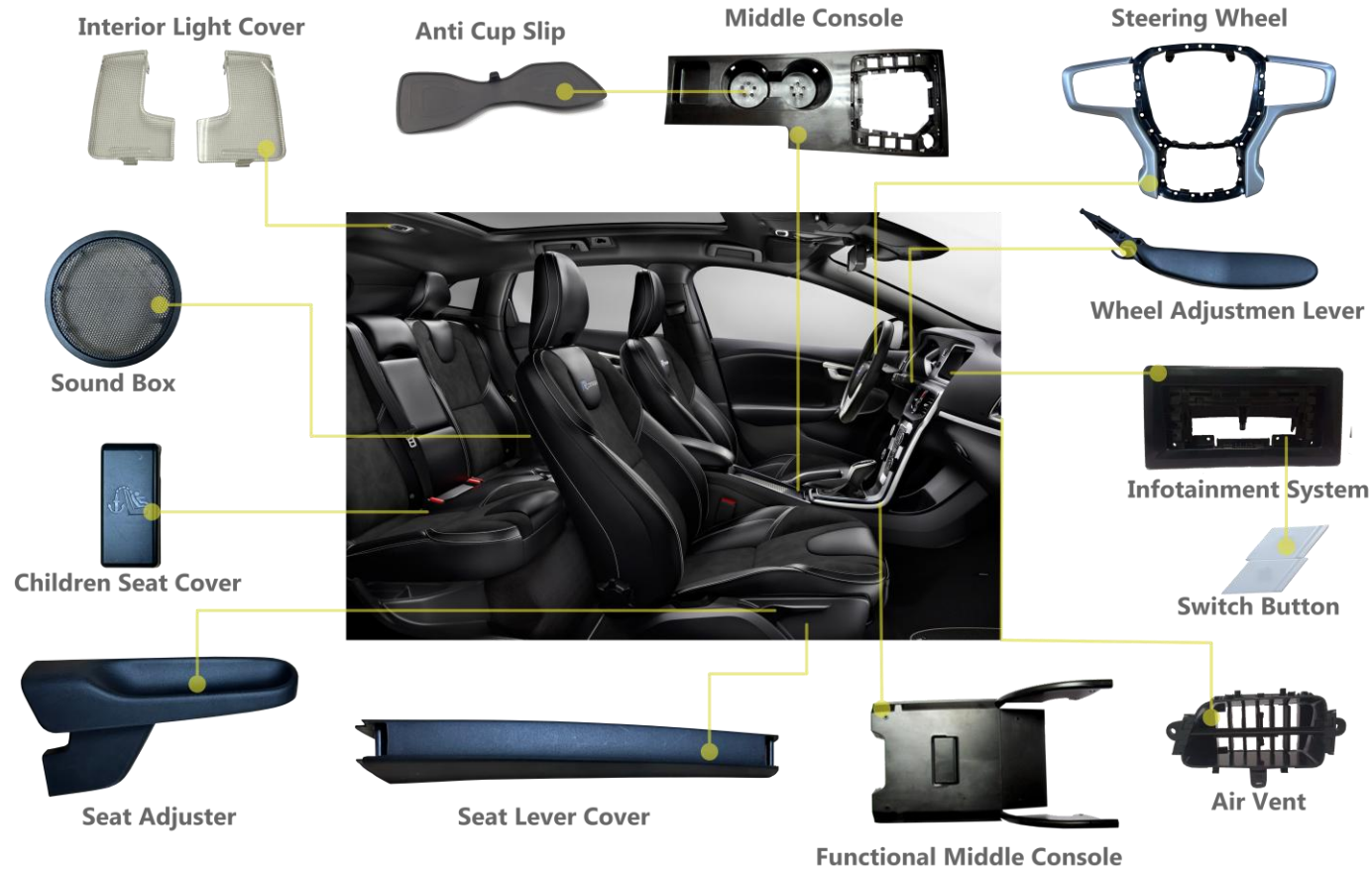
zollner

AUTOMOTIVE

AEROSPACE



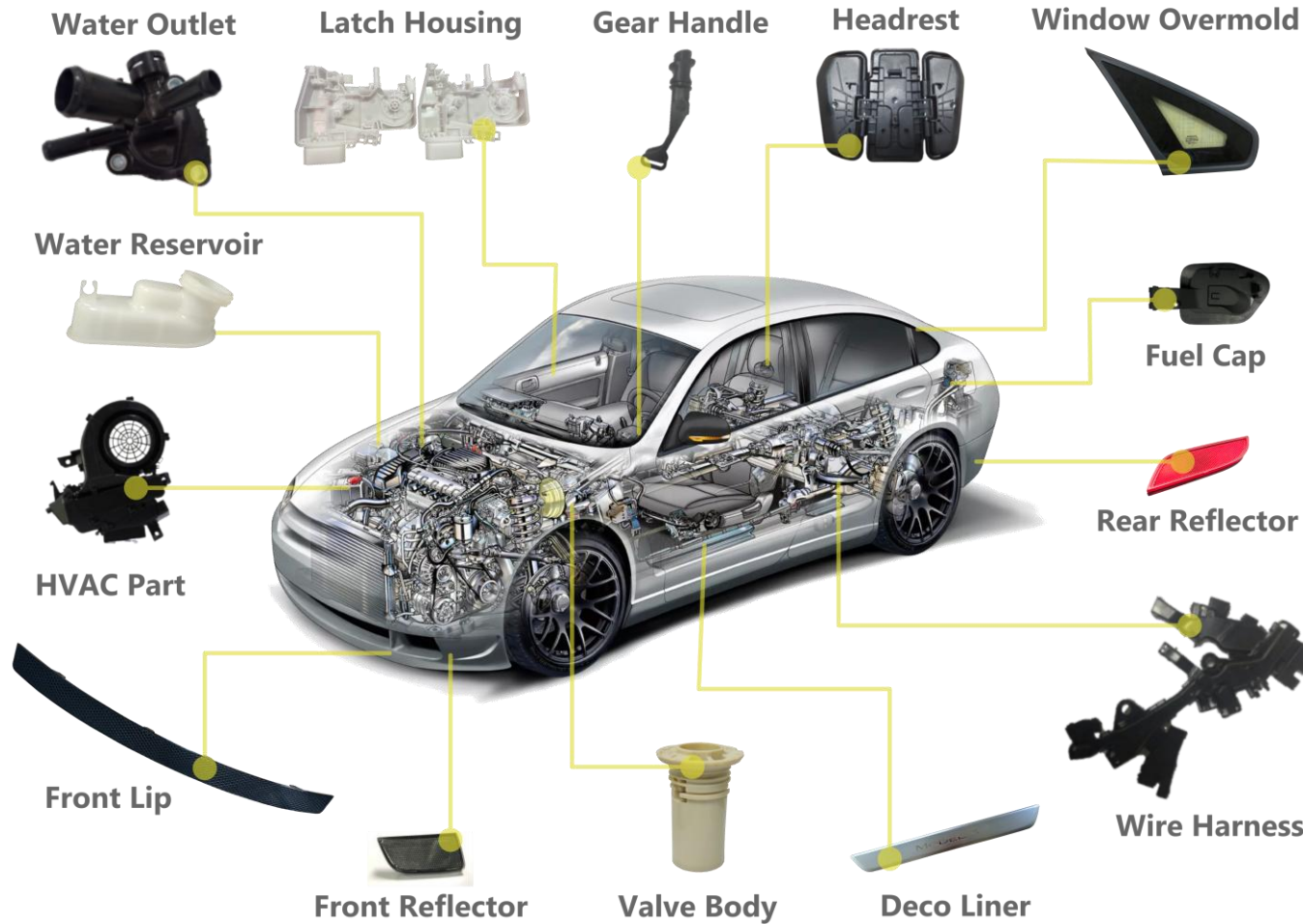
AUTOMOTIVE





REFERENCE PARTS

AUTOMOTIVE





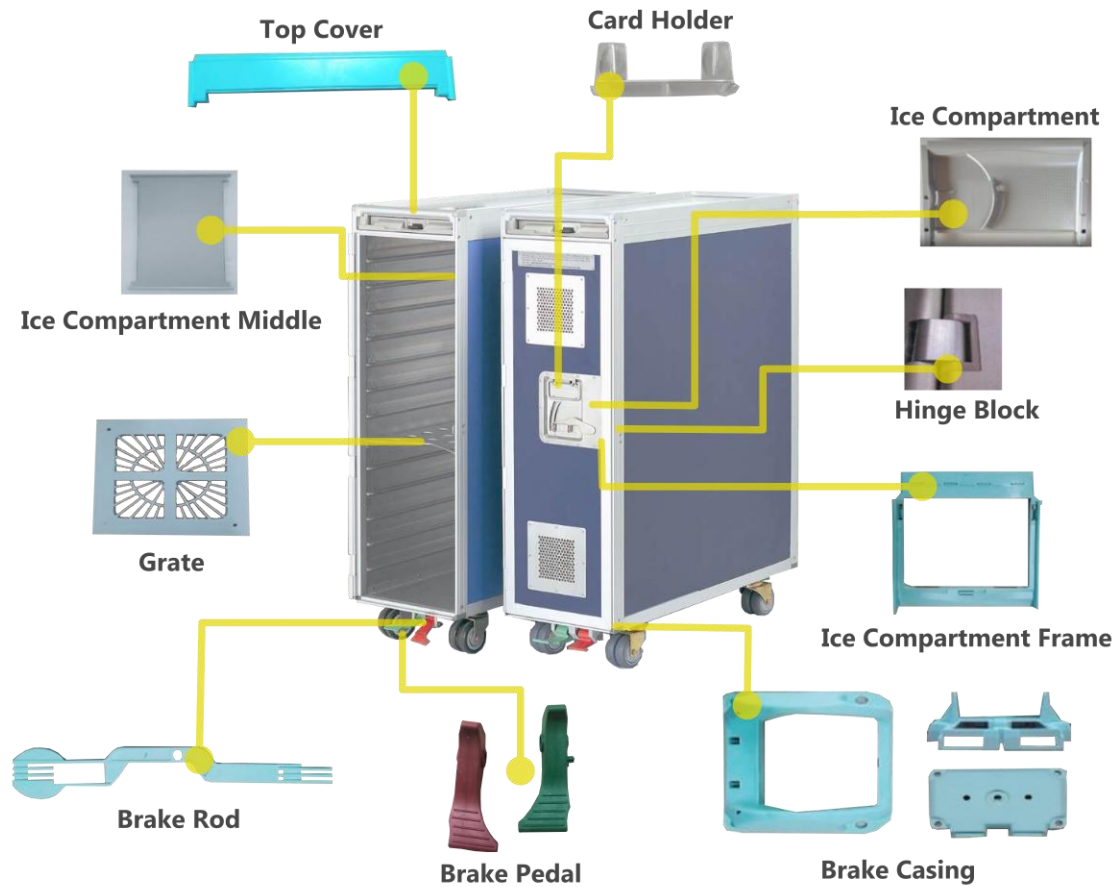
REFERENCE PARTS



AEROSPACE



AEROSPACE





REFERENCE CUSTOMER



Edwards



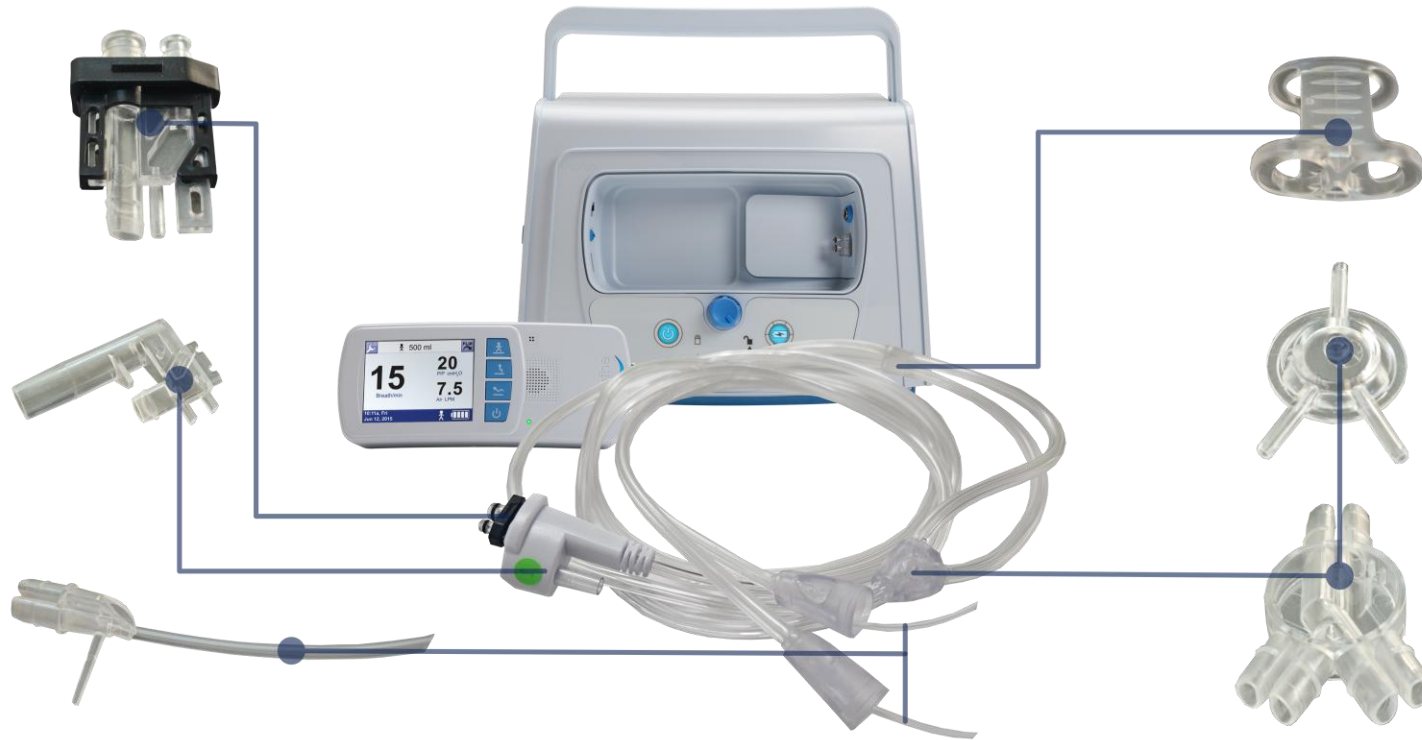
MEDICAL



REFERENCE PARTS

VENTILATION SYSTEM FOR HOME CARE

MEDICAL





REFERENCE PARTS

PCR TESTING PLATFORM

MEDICAL





Consumable Medical parts





REFERENCE CUSTOMER



Zuhause im Freien

SIEMENS



CONSUMER



mecalitgroup



Be Right™



connectwell
THE RIGHT CONNECTION



REFERENCE PARTS

CONSUMER





REFERENCE CUSTOMERS



BOSCH

SIEMENS



YAZAKI

**bankz
POWER**



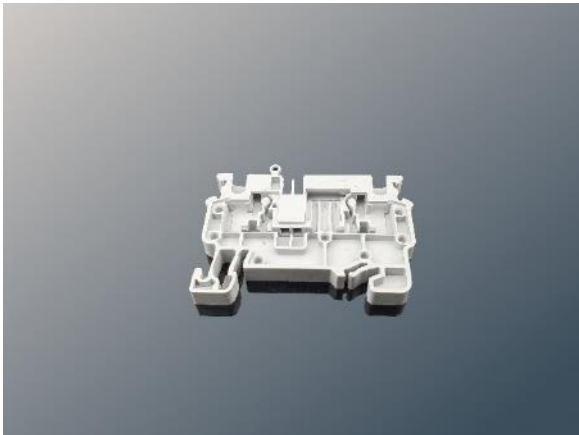
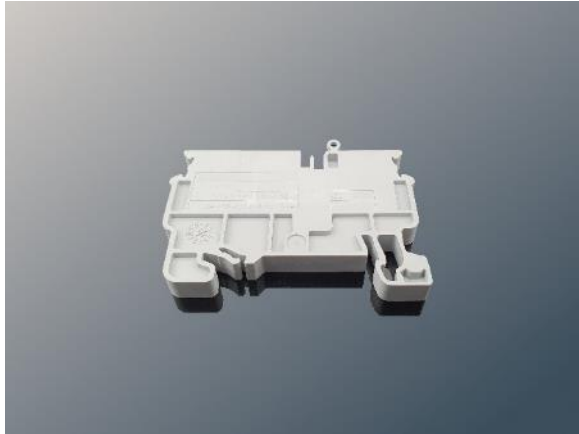
Sensata
Technologies

Leuze

ELECTRONIC



REFERENCE PARTS

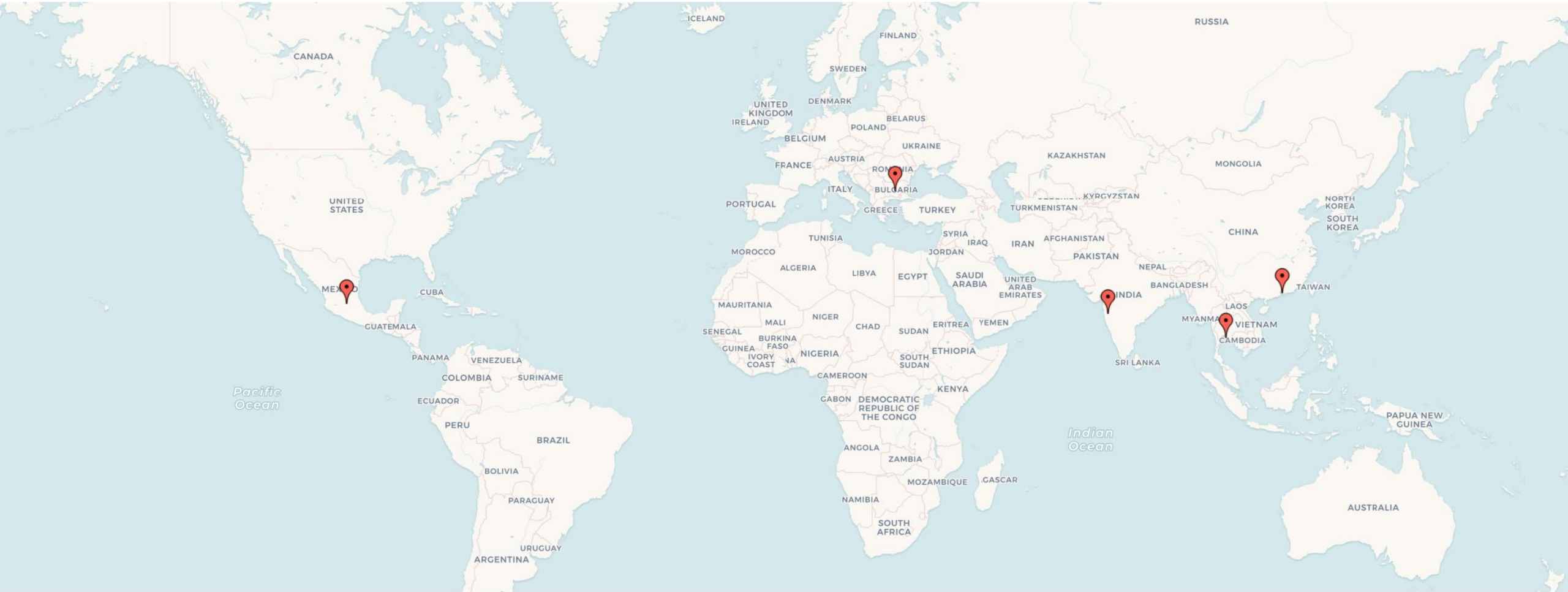


ELECTRONIC





GLOBAL COMPANY WITH A LOCAL FOOTPRINT





VEM CHINA



VEM CHINA
SHENZHEN



VEM CHINA

- **High-precision tool shop, machinery from Switzerland, Japan and Germany**



- **Steel 3D printing & strict QC documentation after every process**



- Injection shop with Arburg machines





VEM THAILAND



**VEM THAILAND
RAYONG**



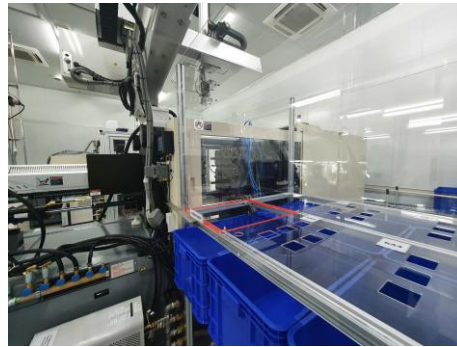
35+ Injection molding machines

Machine range 5 TON to 850 TON

Fully equipped with desiccant dryers, HR controllers, MTC,
Bimetallic barrel



Clean Room ISO 7 / Class 10,000 (Video tour: https://youtu.be/E7YxorH8R_8)



High Level of Production Automation on our product lines.



Aspiration Connector Assembly (Video tour: <https://youtu.be/ZEjtp-krXD4>)



Automated Pipette Tip Manufacturing (Video tour: <https://youtu.be/KWzLKwtBtI0>)





ISO 8 CLEANROOM

Manufacturing line for 3 component Syringes, Hypodermic Needles and Safety Needles





VEM EUROPE

VEM EUROPE PLOVDIV



VEM EUROPE

- **High-precision tool shop, machinery from Switzerland and Germany**



- Injection shop with Arburg machines





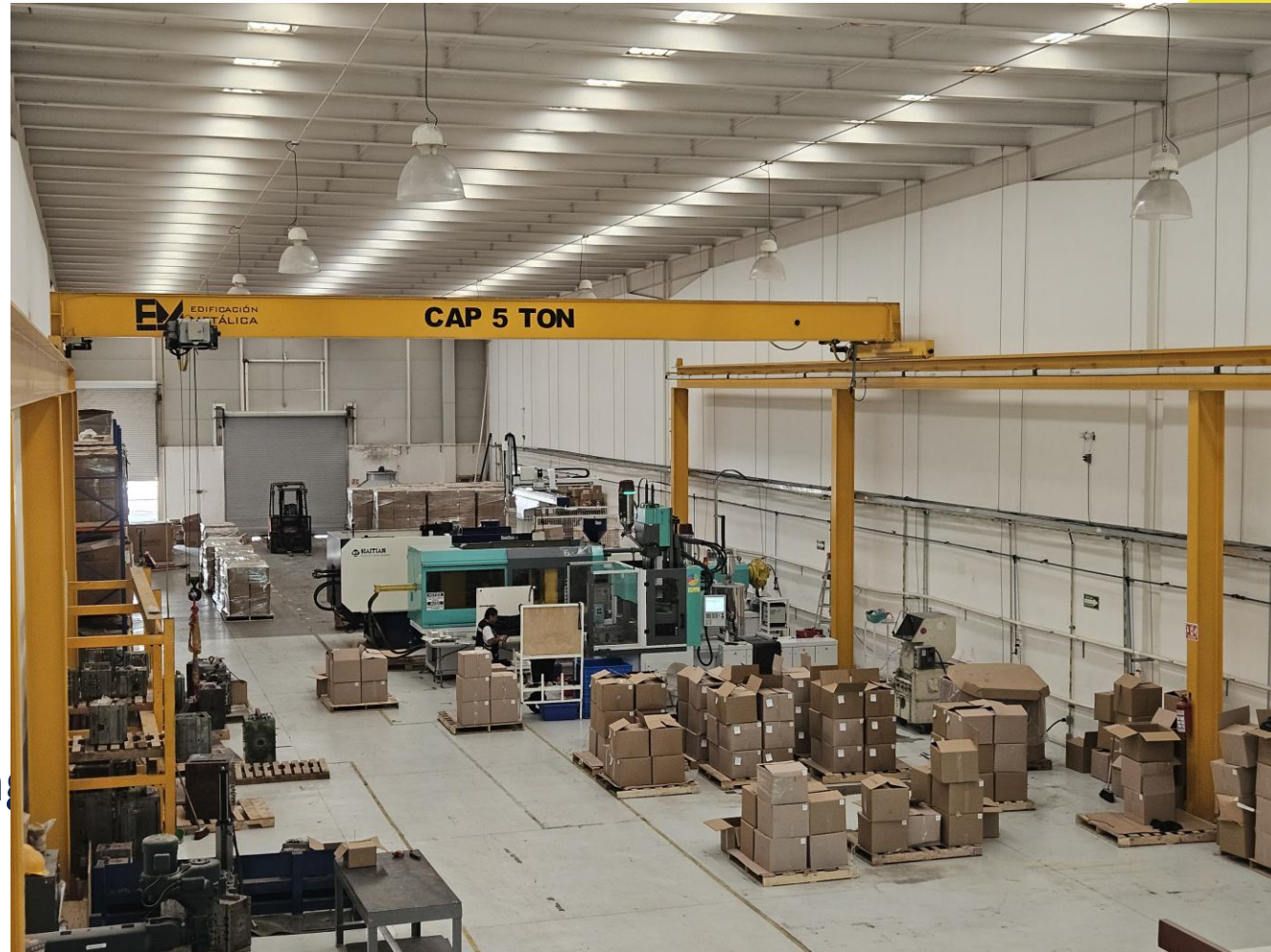


FACTORY 1 (EL MARQUES)

Size:
1000 sqm

Machines:
4 Injection machines
(50t – 470t)

Specialties:
Vertical Injection, 2K Molding
Assembly line





FACTORY 1 (EL MARQUES)

Vertical injection molding: Including assembly line



2K Injection Molding: Including assembly line





FACTORY 2 (LA BOMBA)

Size:

2000 sqm

Machines:

14 Injection machines (50t – 730t)

Specialties:

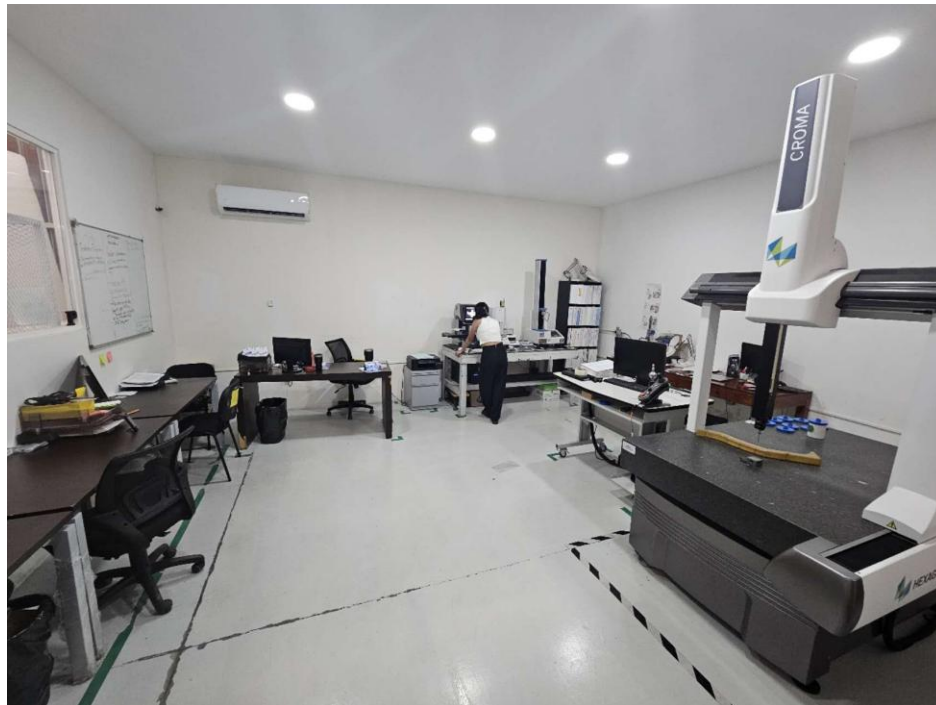
Larger machines (up to 730t)
Assembly line





FACTORY 2 (LA BOMBA)

Various assembly lines, high-tech quality control





**VEM INDIA
PUNE**



VEM INDIA

Machine Shop





VEM INDIA

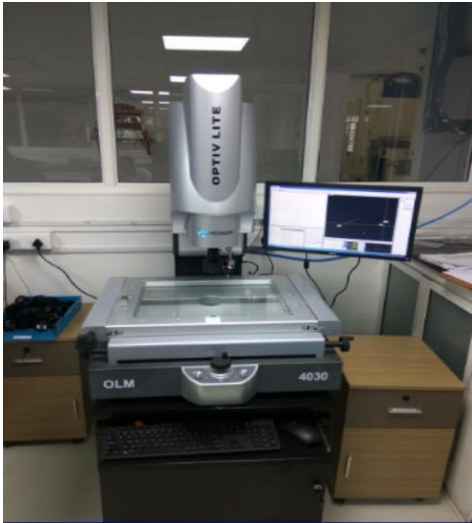
Tool Assembly & Injection Molding (up to 550T)





VEM INDIA

High-tech quality control





GET IN TOUCH



Billy Xia

Plant Manager, BOD Member



Milind Patil

Plant Manager



Silvio Pereira

Plant Manager



Ricardo Silva

Plant Manager



Gopal Kabra

Plant Manager



INTERNATIONAL SALES TEAM



Andrea Abella
Sales West USA



Aidee
Sales North/East USA



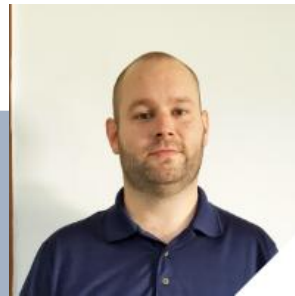
Leonardo Ortega
Sales East USA



Guillermo Martinez
Sales South US



Marilyn Kahler
Sales Arizona USA



Bryan Carroll
USA Tooling Expert



Ilan Brand
Sales Israel



INTERNATIONAL SALES TEAM



Gopal Kabra
Sales India



Mohit Kalani
Sales India



Nina Koleva
Sales East Europe



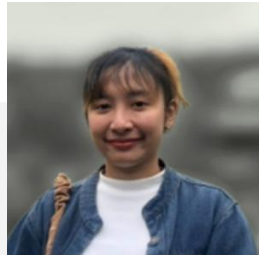
Karl Axmann
Sales Germany/DACH



Radko Babakov
Sales West Europe



Lily Zou
Sales Asia



Rujeerat Chaisiri
Sales Thailand



Max zur Muehlen
Sales APAC



Pas Kongsomboon
Sales Thailand



SALES OFFICES

VEM USA

North/East USA

sales05.mexico@vem-ltd.com

Southwest USA

marilyn.kahler@vem-ltd.com

South USA

sales04.mexico@vem-ltd.com

VEM USA

South-East USA

sales03.mexico@vem-ltd.com

West USA

andrea.abella@vem-ltd.com

Technical Sales

bryan.carroll@vem-ltd.com

VEM Mexico

Queretaro

sales04.mexico@vem-ltd.com

VEM Europe

Germany, Freiburg

karl.axmann@vem-ltd.com

East Europe, Plovdiv

nina.koleva@vem-ltd.com

West Europe, Plovdiv

radko.babakov@vem-ltd.com

VEM India

Pune

g.kabra@vem-ltd.com
mohit.kalani@vem-ltd.com

VEM Thailand

Rayong

rujeerac@vem-ltd.com
max.zm@vem-ltd.com
Pas.Kongsomboon@vem-ltd.com

VEM China

Shenzhen

lily.zou@vem-ltd.com

VEM Israel

Israel


ilan.brand@vem-ltd.com



**German Precision,
American Service,
Asian Prices.....
that's VEM**



MACHINE LIST CHINA

 VEM Tooling(Shenzhen)Co.,Ltd.
维克多精密工业(深圳)有限公司



MACHINE LIST CHINA

Type	Type2	Manufacturer	Model	Description		Year	Quantity
CNC Milling		MIKRON	HSM300	+/- 0.01	mm	2008	1
CNC Milling		MIKRON	HSM400	+/- 0.01	mm	2006	1
CNC Milling		MIKRON	HSM500	+/- 0.01	mm	2008	1
CNC Milling		MIKRON	VCP600	+/- 0.01	mm	2005	1
CNC Milling		MIKRON	VCP1000	+/- 0.01	mm	2006	1
CNC Milling		MORI SEIKI	NV4000 DCG	+/- 0.01	mm	2004	1
CNC Milling		JOINT	VMC1060	+/- 0.01	mm	2016	1
CNC Milling		JOINT	VMC1270	+/- 0.01	mm	2016	1
CNC Milling		YCM	TV158B	+/- 0.01	mm	2016	2
CNC Milling		MAKINO	V33i	+/- 0.005	mm	2020	1
CNC Milling		SMD	SMD-HG600	+/- 0.01	mm	2020	1
CNC Milling		SMD	SMD-H600	+/- 0.01	mm	2017	1
CNC Milling		MORI SEIKI	NL1500MC/500	+/- 0.01	mm	2008	1



MACHINE LIST CHINA

Type	Type2	Manufacturer	Model	Description		Year	Quantity
Die sinking EDM		FT	CNC850	+/- 0.02	mm	2011	1
Die sinking EDM		CHMER	CM655+70N	+/- 0.01	mm	2007	1
Die sinking EDM		CHMER	CM434C+50N+D434	+/- 0.01	mm	2004	1
Die sinking EDM		CHMER	CM-434C	+/- 0.01	mm	2007	1
Die sinking EDM		CHMER	323C+50N	+/- 0.01	mm	2013	1
Die sinking EDM		FT	CNC-450	+/- 0.02	mm	2019	1
Die sinking EDM		Agie Charmilles	FORM200BP	+/- 0.005	mm	2015	1
Die sinking EDM		Agie Charmilles	FORM200BP	+/- 0.005	mm	2016	1
Die sinking EDM		Agie Charmilles	FORM350BP	+/- 0.005	mm	2017	1
Die sinking EDM		Agie Charmilles	FORM350BP	+/- 0.005	mm	2020	1
Die sinking EDM		Agie Charmilles	FORM350BP	+/- 0.005	mm	2020	1
Die sinking EDM		Agie Charmilles	FORM350BP	+/- 0.005	mm	2021	1
Die sinking EDM		BEST	ZNC-435	+/- 0.04	mm	2020	1
Die sinking EDM		BEST	BEST-430	+/- 0.04	mm	2020	1
Die sinking EDM		BEST	BEST-348	+/- 0.04	mm	2020	1
3D steel printer		BLT3D	BLT-A320	+/- 0.2	mm	2021	1
Wire EDM		Agie Charmilles	DRILL20	+/- 0.04	mm	2007	1
Wire EDM		Agie Charmilles	PROGRESS V2	+/- 0.002	mm	2005	1
Wire EDM		Agie Charmilles	PROGRESS	+/- 0.002	mm	2007	2
Wire EDM		BAOMA	DK7763D	+/- 0.02	mm	2008	3
Wire EDM		Agie Charmilles	CUTP350	+/- 0.005	mm	2017	1
Wire EDM		Agie Charmilles	CUTP350	+/- 0.005	mm	2018	1
Wire EDM		Agie Charmilles	CUTP350	+/- 0.005	mm	2020	1



MACHINE LIST CHINA

Type	Type2	Manufacturer	Model	Description		Year	Quantity
Grinder		YU QING	LSG-618S	+/- 0.005	mm	2010	1
Grinder		YU QING	LSG-618S	+/- 0.005	mm	2010	1
Grinder		YU QING	LSG-618S	+/- 0.005	mm	2012	1
Grinder		YU QING	YSG-618	+/- 0.005	mm	2008	1
Grinder		HYBEST	HB-618	+/- 0.005	mm	2010	1
Grinder		HYBEST	HB-618	+/- 0.005	mm	2005	1
Grinder		JIAN DE	KGS-84AHK	+/- 0.01	mm	2005	1
Grinder		JIAN DE	KGS-84AHK	+/- 0.01	mm	2021	1
Grinder		JIAN DE	KGS-250M	+/- 0.005	mm	2005	1
Grinder		Easson	EP-1	+/- 0.02	mm	2005	1
Milling		MODEL	UE-712A	+/- 1	mm	2013	1
Milling		HOLD	HDSKGSJM30-1500	+/- 0.1	mm	2019	1
Milling		HUEN CHEN	HC-900	+/- 0.05	mm	2004	1
Milling		JIAN DE	3K	+/- 0.02	mm	2004	7
Lathe		JIAN YI	C6140A	+/- 0.02	mm	2004	1
Lathe		SHENYANG	CW6180B	+/- 0.02	mm	2007	1
Radial drilling		精准 DH	DH 800DC	+/- 0.08	mm	2021	1
		众联激光	ZL-BX30F	+/- 0.1	mm	2017	1
		SYNCROWACE250DX	MF150362L	+/- 0.5	mm	2015	1
Laser welding		HAN,S LASER	HY1281508052	+/- 0.2	mm	2015	1
Fitting machine		NICE	NC120-1310	+/- 0.05	mm	2020	1



MACHINE LIST CHINA

Type	Type2	Manufacturer	Model	Description		Year	Quantity
Injection	Electric	TOSHIBA	EC75ST	75	T	2016	1
Injection	Electric	TOSHIBA	EC100N II-2A 100T	100	T	2006	1
Injection	Hydraulic	NISSEI	FNX180 III T-25A	180	T	2016	1
Injection	Electric	TOSHIBA	EC220N II-6A 220T	220	T	2006	1
Injection	Electric	TOSHIBA	EC350N II-17A 350T	350	T	2026	1
Injection	Hydraulic	NISSEI	FNX180 III T-25A	180	T	2020	1
Injection	Electric	NISSEI	NEX110 IV-1E	110	T	2020	1
Injection	Hydraulic	ARBURG261579	570 E 2000-800	200	T	2022	1
Injection	Hydraulic	ARBURG262223	570 E 2000-800	200	T	2022	1
Injection	Hydraulic	ARBURG258508	570 E 2000-800	200	T	2022	1
Injection	Hydraulic	ARBURG263293	570 E 2000-800	200	T	2022	1
Injection	Hydraulic	ARBURG263163	570 E 2000-800	200	T	2022	1
Injection	Hydraulic	ARBURG261933	570 E 2000-800	200	T	2022	1
Injection	Hydraulic	BORCHE	BM320-080ML	320	T		1
	CMM	HEXAGON	7.10.7 Global class	+/- 0.003	mm	2015	1
	CMM	HEXAGON	Explorer Classic 06.08.06	+/- 0.003	mm	2020	1
	CMM	HEXAGON	Explorer05.07.05	+/- 0.003	mm	2017	1
	VMM	RATIONAL	VMS-4030F	+/- 0.003	mm	2007	1
	VMM	ACCURAL	4030	+/- 0.003	mm	2016	1
	Height gage	MITUTOYO	QM-height 600	+/- 0.001	mm	2005	1
	Hardness	DECHUAN	HR150A	+/- 0.5	mm	2004	1
	Hardness	TIME	5301	+/- 0.1	mm	2016	1



VEM THAILAND



MACHINE LIST THAILAND



MACHINE LIST THAILAND

Type	Type2	Manufacturer	Model	Description		Year	Quantity
Injection	Electric	CHRISTMANN	BABYPLAST 6/10P	0.5	T	2018	1
Injection	Vertical	JIN TONG	JT-250	30	T	2018	1
Injection	Vertical	JIN TONG	JT-250	30	T	2018	1
Injection	Vertical	JIN TONG	JT-250	30	T	2018	1
Injection	Electric	SHIBAURA	EC50SXII-1A	50	T	2020	1
Injection	Electric	TOSHIBA	EC50SXII-1A	50	T	2018	1
Injection	Hydraulic	KRAUS MAFFEI	50-180-CX	50	T	2018	1
Injection	Hydraulic	CHEN HSONG	MJ55	55	T	2010	1
Injection	Hydraulic	CHEN HSONG	MJ55	55	T	2017	1
Injection	Hydraulic	KRAUS MAFFEI	80-180-CX	80	T	2018	1
Injection	Hydraulic	VAN DORN	VAN DORN EXTRA 90-43	90	T	2004	1
Injection	Hydraulic	CHEN HSONG	JM98Ai	98	T	2017	1
Injection	Electric	ARBURG	AIROUNDER 470E 1000-290	110	T	2015	1
Injection	Electric	ARBURG	AIROUNDER 470E 1000-290	110	T	2015	1
Injection	Electric	NISSEI	NEX-110-IV-1E	110	T	2021	1
Injection	Electric	SHIBAURA	EC130SXII-4A	130	T	2021	1
Injection	Electric	TOSHIBA	EC130ST-3A	130	T	2015	1
Injection	Electric	TOSHIBA	EC130ST-3A	130	T	2015	1
Injection	Electric	TOSHIBA	EC130ST-3A	130	T	2016	1
Injection	Hydraulic	CHEN HSONG	JM138-Ai	138	T	2010	1
Injection	Hydraulic	CHEN HSONG	JM178Ai	178	T	2017	1
Injection	Electric	TOSHIBA	EC180SX-6A	180	T	2018	1
Injection	Hydraulic	NISSEI	FNX-180-III-25A	180	T	2021	1
Injection	Hydraulic	NISSEI	FNX-180-III-25A	180	T	2021	1
Injection	Electric	ARBURG	AAROUNDER 570 E 2000-800	220	T	2015	1
Injection	Electric	TOSHIBA	EC 220 C-6 A	220	T	2008	1
Injection	Electric	SUMITOMO	SE220EV-S-HD	220	T	2025	4
Injection	Electric	SHIBAURA	EC280SX-10A	280	T	2022	1
Injection	Electric	TOSHIBA	EC280SX-10A	280	T	2019	1
Injection	Electric	SHIBAURA	EC350SXIII-17A	350	T	2021	1
Injection	Hydraulic	CHEN HSONG	EM400-SVP/2	400	T	2014	1
Injection	Hydraulic	VAN DORN	VAN DORN 400	400	T	1998	1
Injection	Hydraulic	TOSHIBA	IS 550 GSW-59 A	550	T	2008	1
Injection	Hydraulic	TOSHIBA	IS 850 GTW-i81 A	850	T	2006	1



MACHINE LIST THAILAND

Type	Type2	Manufacturer	Model	Description		Year	Quantity
CNC		YCM	NXV 1020A	+/- 0.01	mm	2016	1
Smart scope		3D FAMILY	VMS 400	+/- 0.01	mm	2008	1
EDM		FT	EM CNC 450	+/- 0.02	mm	2017	1
Grinder		COMBITECH	Surface Grinder YSG-618	+/- 0.02	mm	2010	1
Wire EDM		BAOMA	DK7780D	+/- 0.02	mm	2013	1
EDM		AGIE CHARMILLES	ROBOFORM 35p	+/- 0.05	mm		1
EDM		CHMER	CM 434Z	+/- 0.05	mm	2009	1
Milling		FIRST	LC-185 B-VS	+/- 0.2	mm	2008	1
Turning		CHU SHING	ST-480x1000G	+/- 0.2	mm	2010	1
Drilling		HANTE	Z3040*13	+/- 0.5	mm	2008	1
Grinder		VERTEX	HF-818	NA	mm	2008	1
Laser welding		JANIN CHANGTAI	TPW-200W				1
Hardness tester		BOSCH					1
Band saw			HR-250A				1
TIG welding		V-ONE	WSE-315C				1
Ultrasonic cleaning		SANGHAI TENSE	TS-4800B				1





MACHINE LIST INDIA

Type	Type2	Manufacturer	Model	Description		Year	Quantity
CNC Milling		YCM	NXV-1020A	+/- 0.01	mm	2019	1
CNC Milling		YCM	NXV-1020A	+/- 0.01	mm	2019	1
CNC Milling		YCM	NXV-1020A	+/- 0.01	mm	2016	1
CNC Milling		MIKRON	VCP 1000 DURO	+/- 0.02	mm	2016	1
CNC Milling		MIKRON	VCE 1000 PRO	+/- 0.02	mm	2016	1
CNC Milling		FEELER	VB-715	+/- 0.2	mm	2016	1
CNC Milling		JOINT	VMC-1270	+/- 0.03	mm	2016	1
CNC Milling		JOINT	VMC-1060	+/- 0.5	mm	2016	1
CNC Milling		SEN MAKE CNC	SMD-H600	+/- 0.01	mm	2019	1
CNC Milling		SEN MAKE CNC	SMD-HG600	+/- 0.01	mm	2023	1
CNC Milling		GF Mikron	Mill P 900	+/- 0.005	mm	2024	1
Gun Drill		Accurate	DH-800DC	+/- 0.02	mm	2020	1
CNC Cylindrical Grinding		Jones & Shipman	1300	+/- 0.01	mm	2016	1



MACHINE LIST INDIA

Type	Type2	Manufacturer	Model	Description		Year	Quantity
Die sinking EDM		FT	CNC-450	+/- 0.03	mm		1
Die sinking EDM		FT	CNC-450	+/- 0.03	mm		1
Die sinking EDM		FT	CNC-450	+/- 0.03	mm		1
Die sinking EDM		FT	CNC-450	+/- 0.03	mm		1
Die sinking EDM		Chmer	6040L	+/- 0.002	mm		1
Die sinking EDM		Chmer	CM 434C	+/- 0.03	mm		1
Die sinking EDM		Chmer	CM434C	+/- 0.03	mm		1
Wire EDM		BAOMA	BMW-2008	+/- 0.01	mm		1
Wire EDM		AGIE	AGIECUT PROGRESS-2005	+/- 0.01	mm		1
Wire EDM		AGIE	AGIECUT PROGRESS-2005	+/- 0.01	mm		1
Spark drill		BAOMA	BMD-703	+/- 0.1	mm		1



MACHINE LIST INDIA

Type	Type2	Manufacturer	Model	Description	Year	Quantity
Grinding		KENT	KGS-84AHK	+/- 0.01 mm		1
Grinding		KENT	KGS-84AHK	+/- 0.01 mm		1
Grinding		SEEDTEC	LSG-518S	+/- 0.01 mm		1
Grinding		SEEDTEC	LSG-518S	+/- 0.01 mm		1
Grinding		HYFAIR	HF-818	+/- 0.005 mm		1
Manual milling		3A-S	GB4240	+/- 0.05 mm		1
Manual milling		3A-S	GB4240	+/- 0.05 mm		1
Bandsaw		TF	TFL-200E-D	+/- 0.02 mm		1
Bench grinder		GLORIOUS GEAR	BG-83			1
Laser welding		Tongfa	TFL - 200 E-D			1
Lathe		UNIVERSAL	C6140A1	+/- 0.1 mm		1



MACHINE LIST INDIA

Type	Type2	Manufacturer	Model	Description		Quantity
Injection	Electric	Toshiba	EC50SXIII-1A	50	T	1
Injection	Electric	Toshiba	TS 100	100	T	1
Injection	Electric	LIZHU	LZ-2V9	120	T	1
Injection	Hydraulic	Milacron		230	T	1
Injection	Hydraulic	Milacron		230	T	1
Injection	Hydraulic	Toshiba	EC230SXII	230	T	1
Injection	Hydraulic	Toshiba	IS550GS-59A	550	T	1
CMM		Mitutoyo	EURO-C-A544	+/- 0.002	mm	1
CMM		Hexagon	CROMA 8.10.6	+/- 0.002	mm	1
VMM		Hexagon	OPTIVLITE	+/- 0.005	mm	1
3D scanner		Okio	9M-HD	+/- 0.01	mm	1





MACHINE LIST MEXICO

Type	Type2	Manufacturer	Model	Description	Year	Quantity
Injection	Electric	Toshiba	EC75SXII-2A	75	T	1
Injection	Electric	Haitian	MA 900M	90	T	1
Injection	Electric	Arburg	ALLROUNDER 470E	100	T	1
Injection	Electric	Arburg	ALLROUNDER 470E	100	T	1
Injection	Electric	Arburg	ALLROUNDER 470E	100	T	1
Injection	Electric	Arburg	ALLROUNDER 520 E	150	T	1
Injection	Electric	Arburg	ALLROUNDER 570E	200	T	1
Injection	Electric	Arburg	ALLROUNDER 570E	200	T	1
Injection	Hydraulic	Arburg	ALLROUNDER 720 S	300	T	1
Injection	Hydraulic	Arburg	ALLROUNDER 820S	400	T	1
Injection	Hydraulic	Van Dorn	85HT5-0966	85	T	1
Injection	Hydraulic	Van Dorn	170HT14-0981	170	T	1
Injection	Hydraulic	Van Dorn	230HT1220-1330	230	T	1
Injection	Hydraulic	Van Dorn	300HT20-3061	300	T	1
Injection	Hydraulic	Van Dorn	400-RS-48F-HT284	400	T	1
Injection	Hydraulic	Van Dorn	650HT2800-0299	650	T	1
Injection	Hydraulic	Van Dorn	730SP2800-0086	730	T	1
Injection	Hydraulic	Arburg Vertical	264187	160	T	1
Injection	Hydraulic	Haitian 2K	MA 4700M	470	T	1
SURFACE GRINDING		KENT	KGS-84		mm	1
SURFACE GRINDING		KENT	KGS-616 S		mm	1
EDM		CHMER	CM434C		mm	1
MILLING		VTC	MEA-25U-05-1227		mm	1
LATHE		GUANGZHOU	C6132Ai		mm	1
Projector		KEYENCE	IM-7030	+/- 0.008	mm	1
CMM		HEXAGON	Croma 8106	+/- 0.001	mm	1



MACHINE LIST EUROPE



MACHINE LIST EUROPE

Type	Type2	Manufacturer	Model	Description	Year	Quantity
CNC Milling		HERMLE	C400-3 axis	+/-0.008 mm	2019	1
CNC Milling		HERMLE	C32-5 axis	+/-0.008 mm	2019	1
CNC Milling		JOINT	VMC-1270	+/- 0.02 mm	2016	1
CNC Milling		JOINT	VMC-1060	+/- 0.02 mm	2016	1
CNC Milling		JOINT	VMC-1270L	+/- 0.02 mm	2023	1
CNC Milling		JOINT	VMC-V116P	+/- 0.02 mm	2023	1
CNC Milling		JOINT	VMC-V116P(15K)	+/- 0.02 mm	2023	1
Gun drill		Accurate	DH-800DC	+/- 0.02 mm	2020	1
Graphite CNC		SMD	SMD-HG600	+/- 0.01 mm	2019	1
Die sinking EDM		GF	Agie Charmilles FORM P350	+/- 0.008 mm	2019	1
Die sinking EDM		CHMER	CM-434C	+/- 0.01 mm	2016	1
Die sinking EDM		FT	CNC-450	+/- 0.01 mm	2016	1
Die sinking EDM		ONA	NX4F	+/- 0.005 mm	2022	1
Start hole EDM		Charmilles	Charmilles HD 30 CNC	mm	2005	1
Start hole EDM		Charmilles	Charmilles HD 30 CNC	mm	2023	1
Wire EDM		GF	AgieCharmilles CUT E 350	+/- 0.005 mm	2019	1



MACHINE LIST EUROPE

Type	Type2	Manufacturer	Model	Description	Year	Quantity
Surface grinder		HF	HF-818	+/- 0.002 mm	2019	1
Surface grinder		SEE DTEC	LSG-618S	+/- 0.005 mm	2019	1
Surface grinder		KENT	KGS-615AHD	+/- 0.005 mm	2015	1
Lathe		Guangzhou	C6140A1/1000	+/- 0.05 mm	2020	1
Manual milling		Joint	Ratee 4E	+/- 0.02 mm	2020	1
Manual milling		FT	3K	+/- 0.02 mm	2010	1
Radial drill		HUEN Chen	HC1200	+/-0.05 mm	2019	1
Tool presetter		Haimer	Uno Premium	+/-0.002 mm	2019	1
Spotting press		AQUAmate Machinery Co	LS-120	+/- 0.1 mm	2016	1
Band saw		Weiren	GB4240	+/- 1 mm	2020	1
Laser engraving		ZL	ZL-BX30F	+/- 0.02 mm	2020	1
Laser welding		TF	TFL-200E-D	+/- 0.02 mm	2020	1
Sand blasting					2020	1



MACHINE LIST EUROPE

Type	Type2	Manufacturer	Model	Description		Year	Quantity
Injection	Electric	Arburg	ALLROUNDER 570 E,GOLDEN	200	T	2020	1
Injection	Electric	Arburg	ALLROUNDER 520 E,GOLDEN	150	T	2020	1
Injection	Electric	Arburg	ALLROUNDER 370 E,GOLDEN	60	T	2021	1
Injection	Electric	Arburg	ALLROUNDER 820 S	400	T	2019	1
Injection	Electric	Arburg	ALLROUNDER 720 S	320	T	2020	1
CMM		Mitutoyo	CrystalPlusM574	+/- 0.003	mm	2021	1
3D scanner		Okio	9M-HD	+/- 0.01	mm	2022	1